



JIM CHAPMAN
COMMUNITIES

Well Earned Elegance

The Juniper



Elevation A



Elevation B



Elevation C

JimChapmanCommunities.com

Building Trust. Building Futures.

Due to the evolutionary nature of our design improvement process, there may be actual versus design variations in room dimensions, door swings and window and door locations. These floor plans and any dimensions and square footages shown herein are only approximations. Any homeowner who is concerned about any representations regarding the floor plans should do his or her own investigation as to the dimensions, measurements and square footage of his/her home. We reserve the right to substitute materials of comparable quality. These plans are the sole and absolute property of Jim Chapman Communities, Inc. Use or copying of these plans, without the express written consent of Jim Chapman Communities, Inc., is illegal.

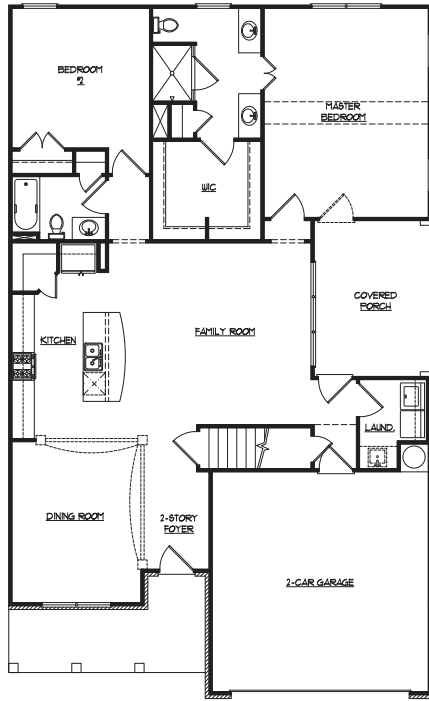




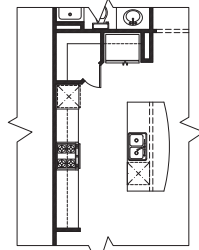
JIM CHAPMAN
COMMUNITIES

Well Earned Elegance

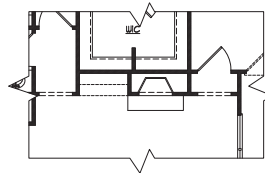
The Juniper



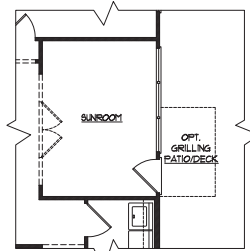
Main Level



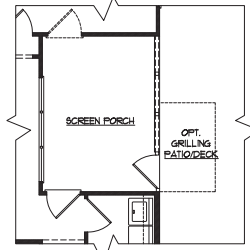
Optional Gourmet Kitchen



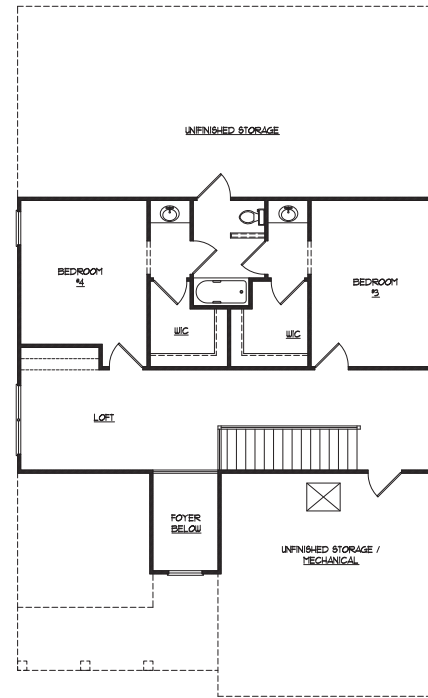
Optional Fireplace



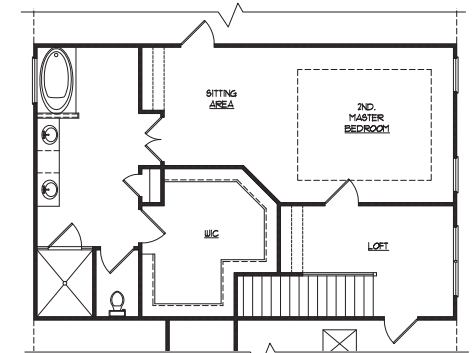
Optional Sunroom



Optional Screen Porch



Second Level



Optional Second Level with 2nd Master Suite

JimChapmanCommunities.com

Building Trust. Building Futures.

Due to the evolutionary nature of our design improvement process, there may be actual versus design variations in room dimensions, door swings and window and door locations. These floor plans and any dimensions and square footages shown herein are only approximations. Any homeowner who is concerned about any representations regarding the floor plans should do his or her own investigation as to the dimensions, measurements and square footage of his/her home. We reserve the right to substitute materials of comparable quality. These plans are the sole and absolute property of Jim Chapman Communities, Inc. Use or copying of these plans, without the express written consent of Jim Chapman Communities, Inc., is illegal.

