



**JIM CHAPMAN**  
COMMUNITIES

*Well Earned Elegance*

# The Milton



***JimChapmanCommunities.com***

***Building Trust. Building Futures.***

*Due to the evolutionary nature of our design improvement process, there may be actual versus design variations in room dimensions, door swings and window and door locations. These floor plans and any dimensions and square footages shown herein are only approximations. Any homeowner who is concerned about any representations regarding the floor plans should do his or her own investigation as to the dimensions, measurements and square footage of his/her home. We reserve the right to substitute materials of comparable quality. These plans are the sole and absolute property of Jim Chapman Communities, Inc. Use or copying of these plans, without the express written consent of Jim Chapman Communities, Inc., is illegal.*



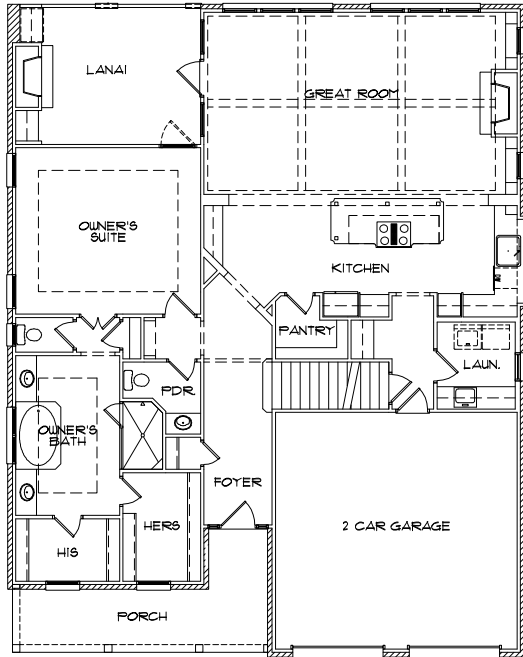


**JIM CHAPMAN**  
COMMUNITIES

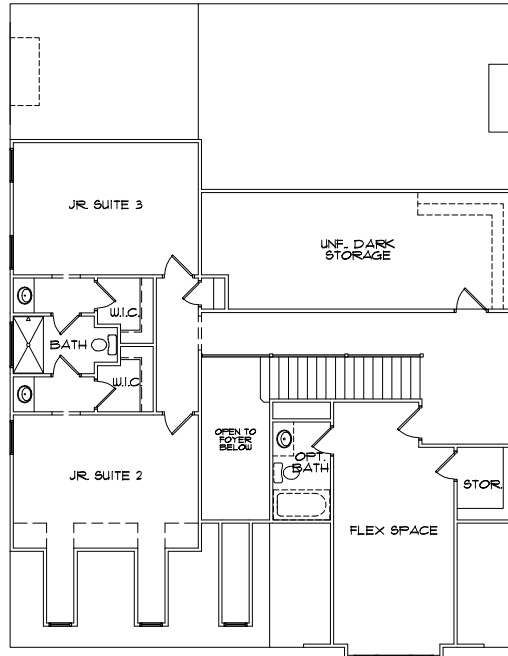
*Well Earned Elegance*

# The Milton

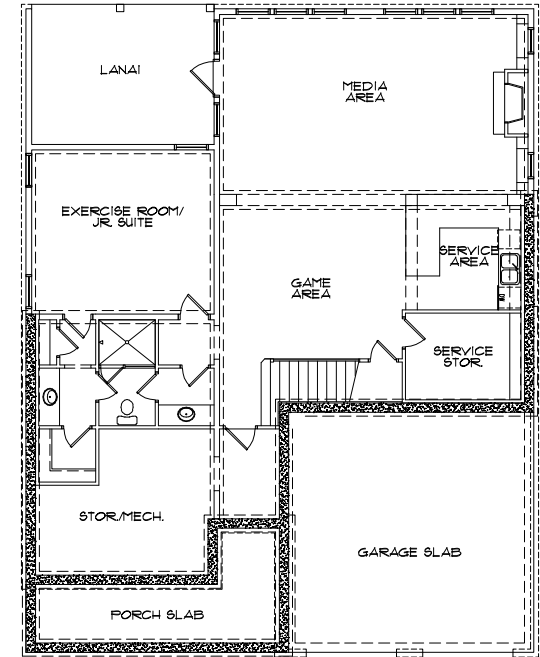
3 BEDROOM, 2 FULL BATH  
ONE 1/2 BATH, WITH FULL BASEMENT



**Main Level**

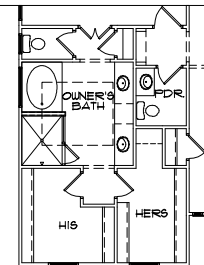


**Second Level**



**Basement**

**Optional  
Owner's  
Bath**



MAIN LEVEL HEATED AREA: APPROX. 1,741 S.F.  
2ND FLOOR HEATED AREA: APPROX. 1,288 S.F.  
POTENTIAL BASEMENT AREA: APPROX. 1,306 S.F.  
TOTAL: 3,029 S.F.

**JimChapmanCommunities.com**

*Building Trust. Building Futures.*

*Due to the evolutionary nature of our design improvement process, there may be actual versus design variations in room dimensions, door swings and window and door locations. These floor plans and any dimensions and square footages shown herein are only approximations. Any homeowner who is concerned about any representations regarding the floor plans should do his or her own investigation as to the dimensions, measurements and square footage of his/her home. We reserve the right to substitute materials of comparable quality. These plans are the sole and absolute property of Jim Chapman Communities, Inc. Use or copying of these plans, without the express written consent of Jim Chapman Communities, Inc., is illegal.*

